



# Siemens Mobility North America

We transform mobility for everyone

# Technology to **transform** **the everyday**

Together with our customers and partners, we transform the everyday by creating sustainable mobility solutions.



# Siemens Mobility **strategic priorities**



## **Customer impact**

We anticipate what our customers need before they even know they need it.



## **Technology with purpose**

Innovative technology has been at the core of Siemens for more than 170 years and it will remain at the core of the future we're building.



## **Empowered people**

Driving progress by empowering our customers, partners, and employees.



## **Growth mindset**

Rather than making yesterday last, we are committed to building tomorrow – by learning and being open to change.

# Leading through technology





**Our strategy is leadership through technology,**  
and we will expand this by creating an open ecosystem for everyone.

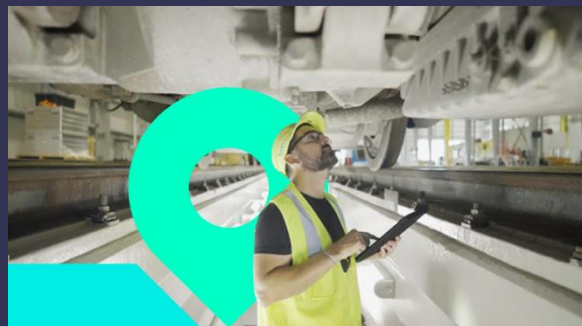


Interoperable and connected ecosystem

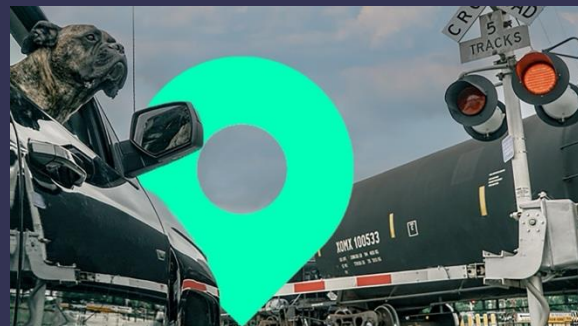
## Four technology levers



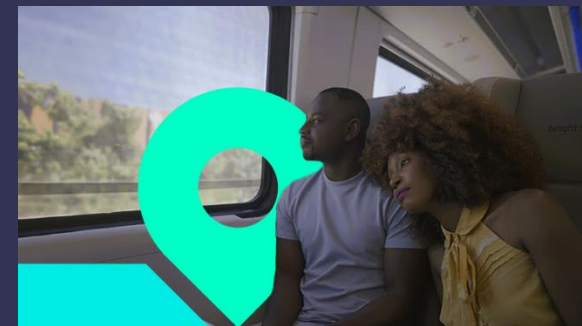
Life cycle cost optimized rail infrastructure & rolling stock



100% system availability



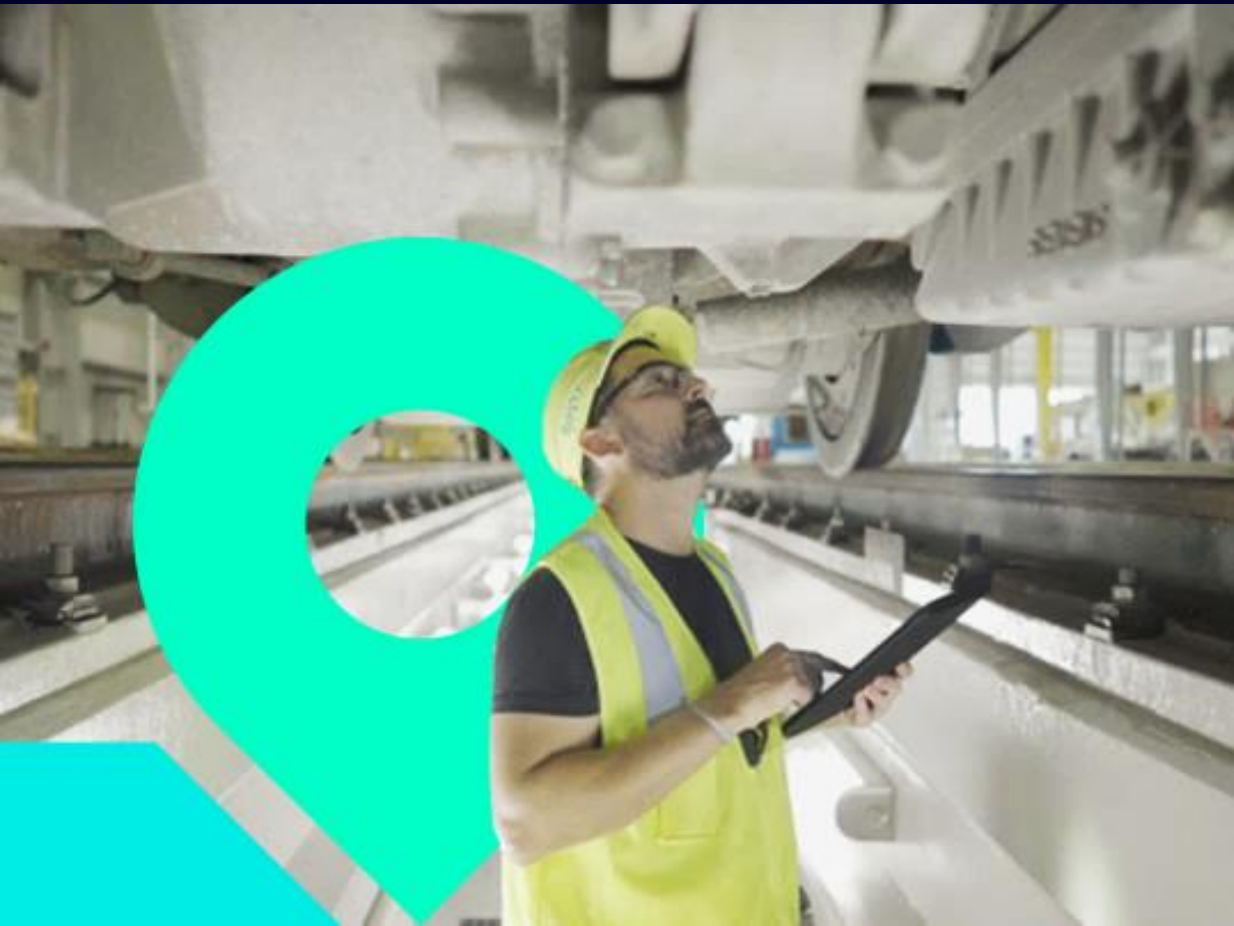
Maximized network capacity



Optimized customer experience and processes

Provide **sustainable**, **comfortable**, and **cost-effective** rail solutions

# 100% system availability



Up to **30%**

reduction of unscheduled depot stops through maintenance intelligence

Up to **10%**

service reliability improvement through digital asset management for rail systems

Railigent X

Managed cybersecurity services

MoBase

TSSSA

Depot & service network

Maintenance services

Full service

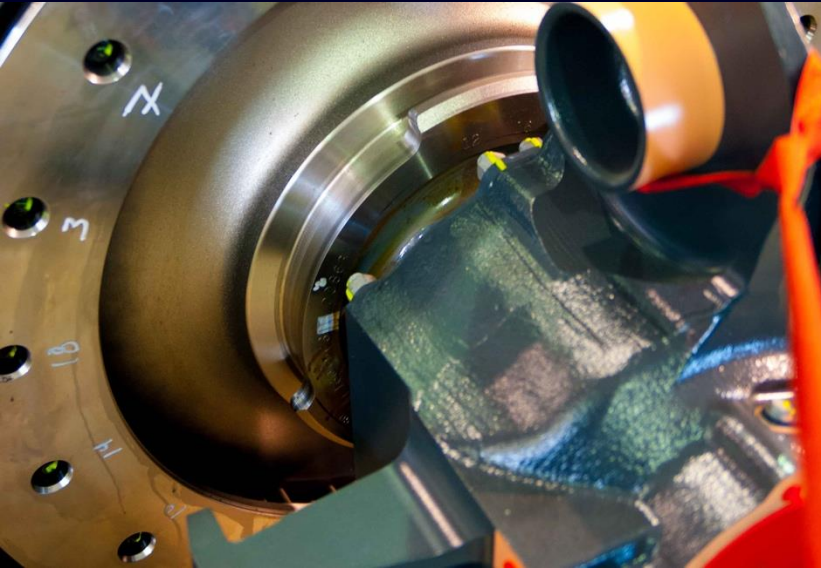
Easy Spares

Qualification & training

Train Dispatching Services

# 100% system availability

## Selected proof points



### TSSSA

... is designed to improve maintenance operations and fleet performance at a fixed cost to continuously improve our performance and performance of your fleet.

Venture trainsets for Brightline Florida



### Train dispatching services

... integrates all rail operations and operating rules for the safe, efficient control of train traffic.

Metrolinx, Toronto, Ontario



### Maintenance services

... include full maintenance and technical support operations to optimize the rail system.

Venture trainsets for Brightline Florida



# Accelerating digital transformation





# Why we need to digitalize railways now



01

The demand for sustainable mobility is growing

02

The new normal makes passenger movement less predictable

03

Building new tracks is not always the solution

04

Infrastructure in the cloud is less prone to failure

05

Scheduling maintenance based on data reduces downtimes

06

Managing all assets centrally increases availability

07


Passengers expect service-like convenience from mobility providers

08

Passengers don't want to navigate multiple mobility offerings


09

Truly seamless travel requires connected ecosystems



**Siemens Xcelerator** connects different mobility players on one **open digital business platform** using APIs to help unify systems and improve operations.

How do we do this?

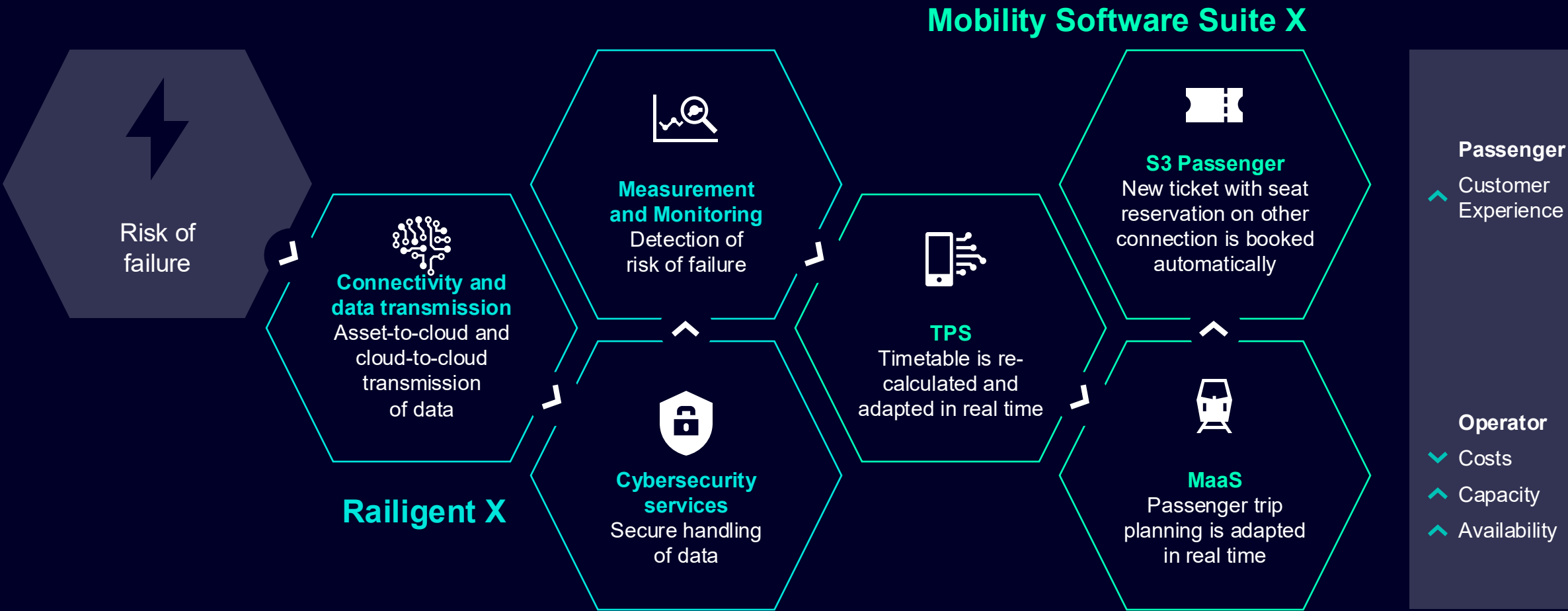


Make software  
more modular

Use standard-  
dized APIs

Move software  
modules to the cloud

By opening interfaces horizontally and vertically, both operators and passengers will benefit | Exemplary use case





# Our industry leading offerings



# Rail Services provides services for Rolling Stock and Rail Infrastructure throughout the entire lifecycle, giving rail traffic a powerful and reliable basis



## Spare part services

### Amtrak Northeast Corridor

- A 15-year TSSSA agreement with Amtrak for the fleet of 70 ACS-64 locomotives maintains the vehicle's online transmission data, analysis systems, and actions generated for the depot



## Maintenance services

### Brightline Florida

- Brightline needed 100% fleet availability and reliability to keep their trains running on time
- We combined proven maintenance solutions and the latest in digital monitoring and analysis to guarantee fleet availability and make it happen



## Overhaul services

### TriMet Portland

- Overhaul of 70 light rail vehicles reaching half of service life to increase their value over the lifecycle
- Reduced energy consumption and saved resources for new vehicles



## Track, signal, and right-of-way services

- Our boots-on-the-ground maintenance teams provide 365, 25-7 service for dozens of railways in North America
- Expertise in track and signaling, electrification, and communication systems servicing

# Accident and Corrosion Repair

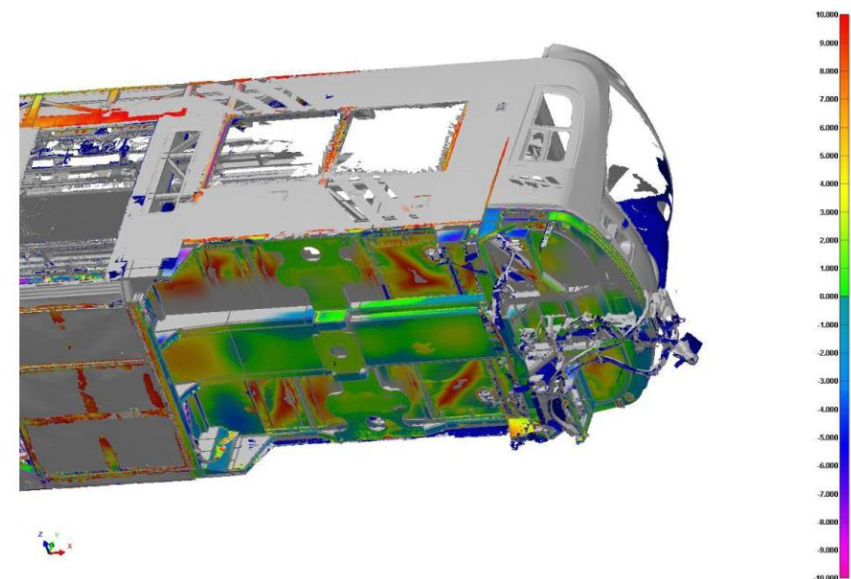
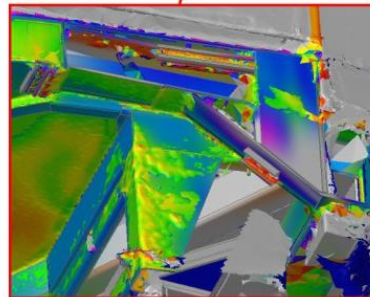
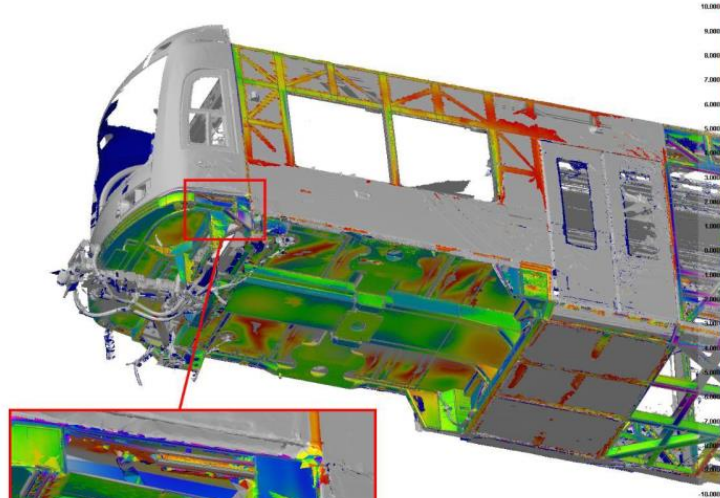
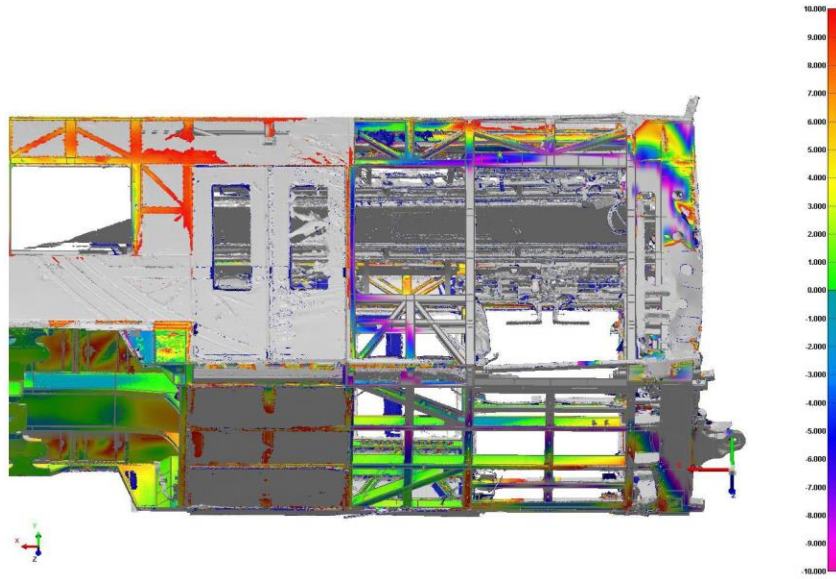


- Damage Assessment
- Engineering analysis
- Supply Chain
- Obsolete material
- Matches OEM design
- Disassembly, Structural repair, reassembly
- Testing and commissioning
- Quality Assurance
- End to end project management

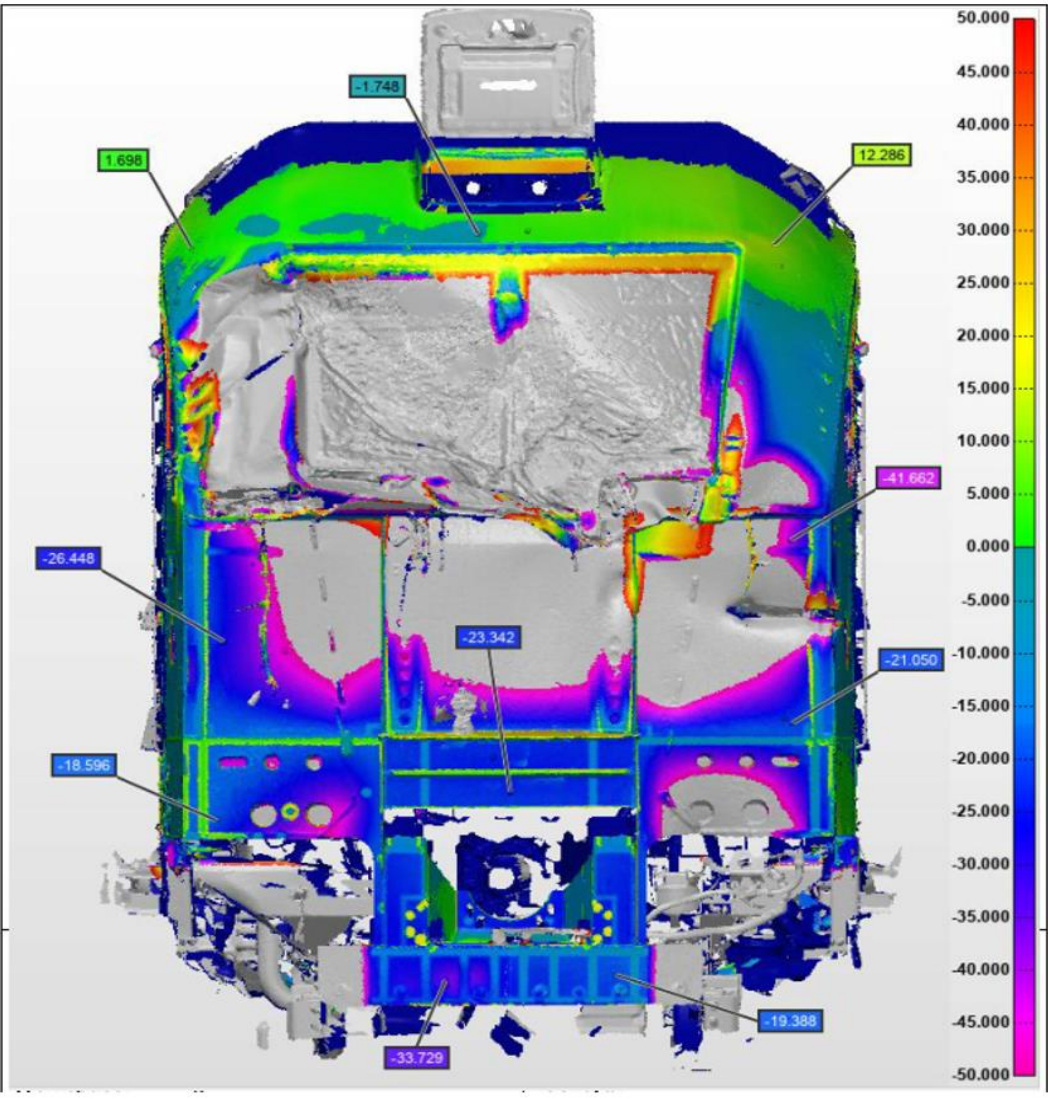
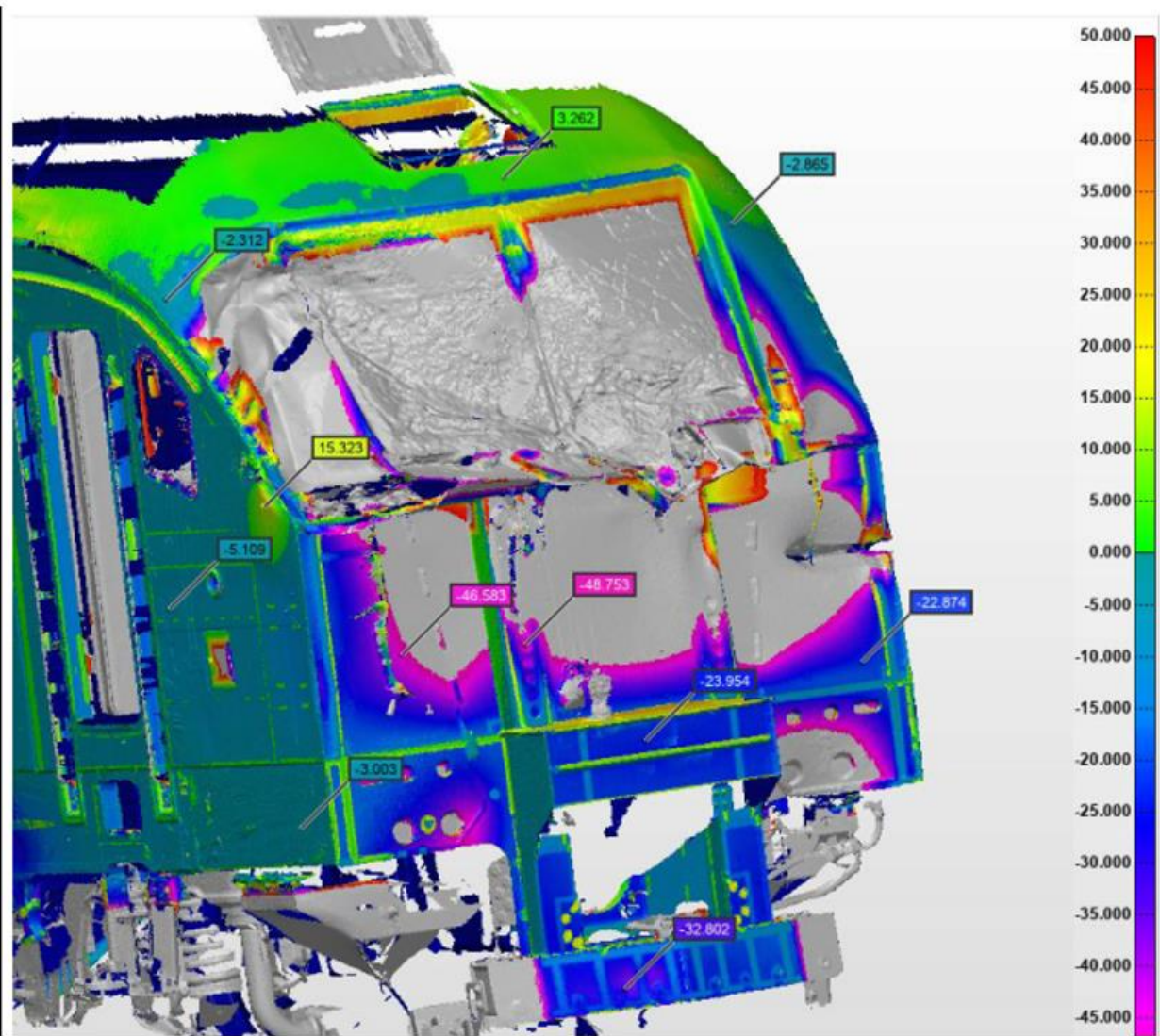




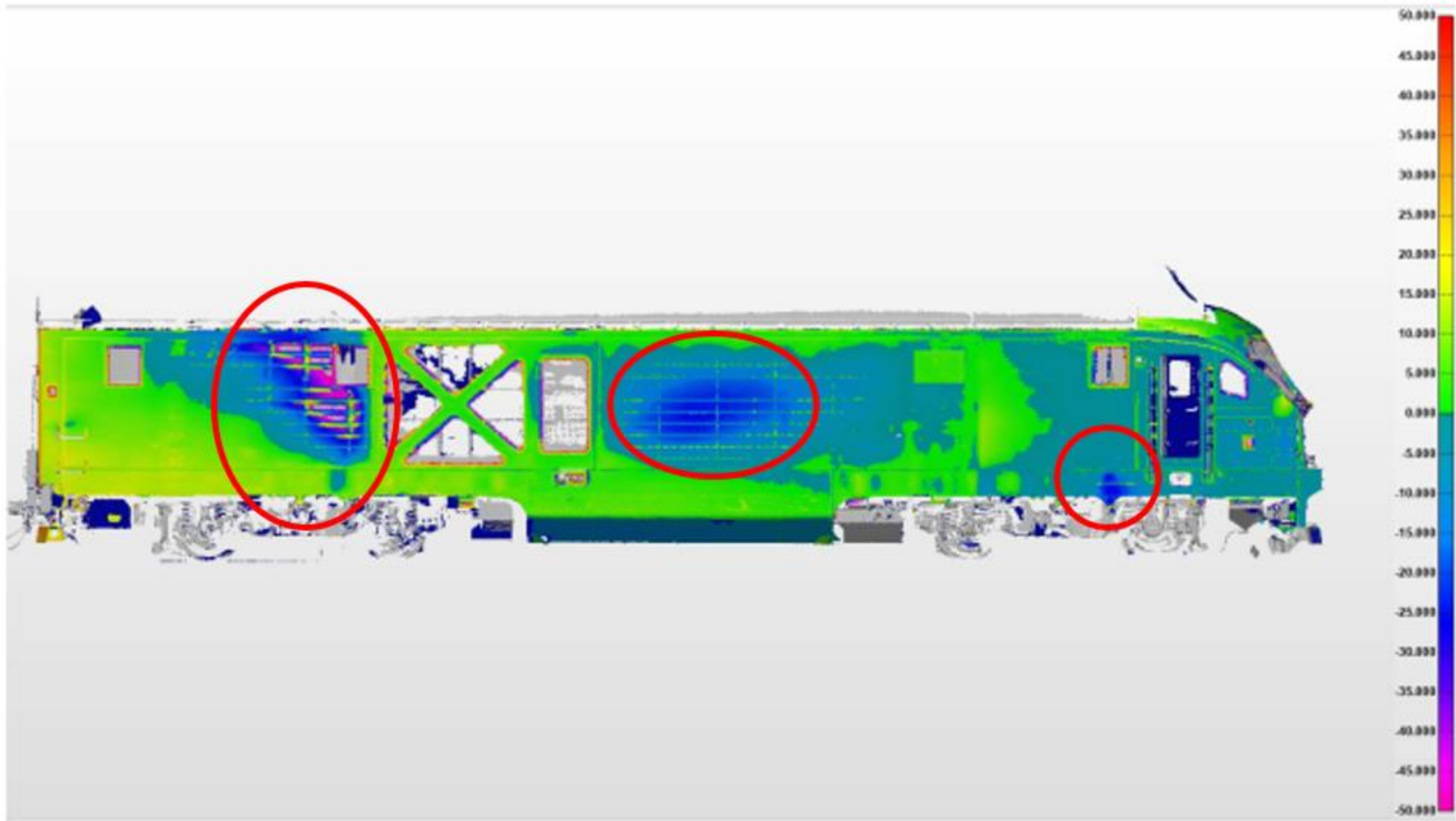
# CS Accident Repairs: 3D laser scan



Scanning Evaluation

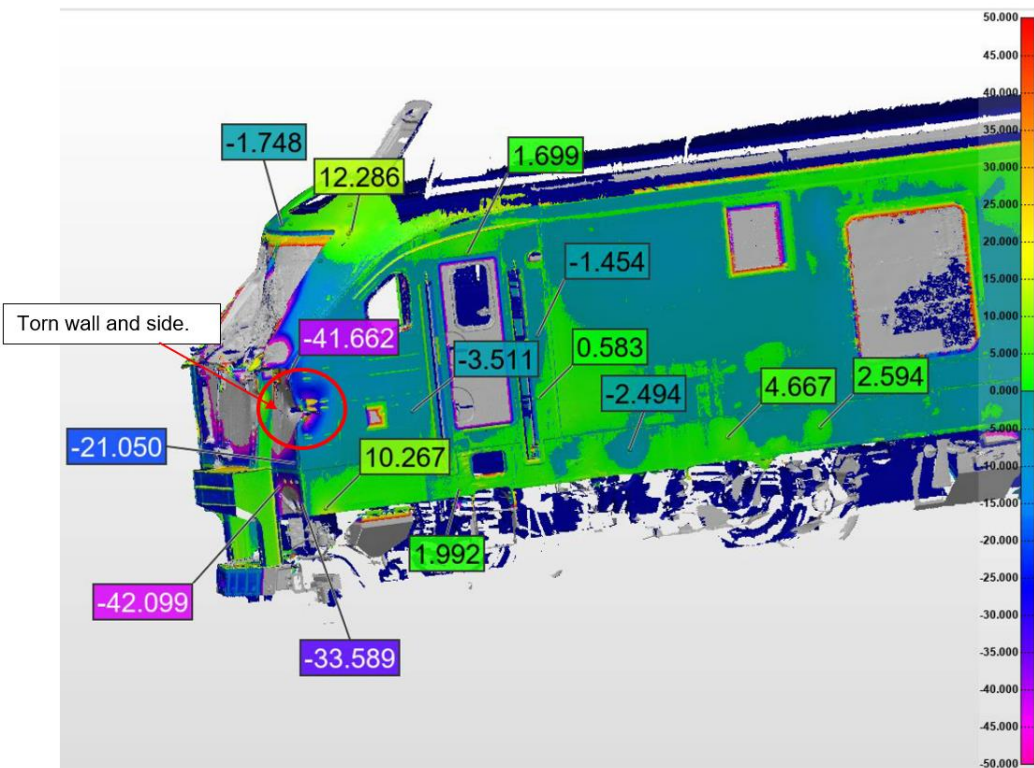




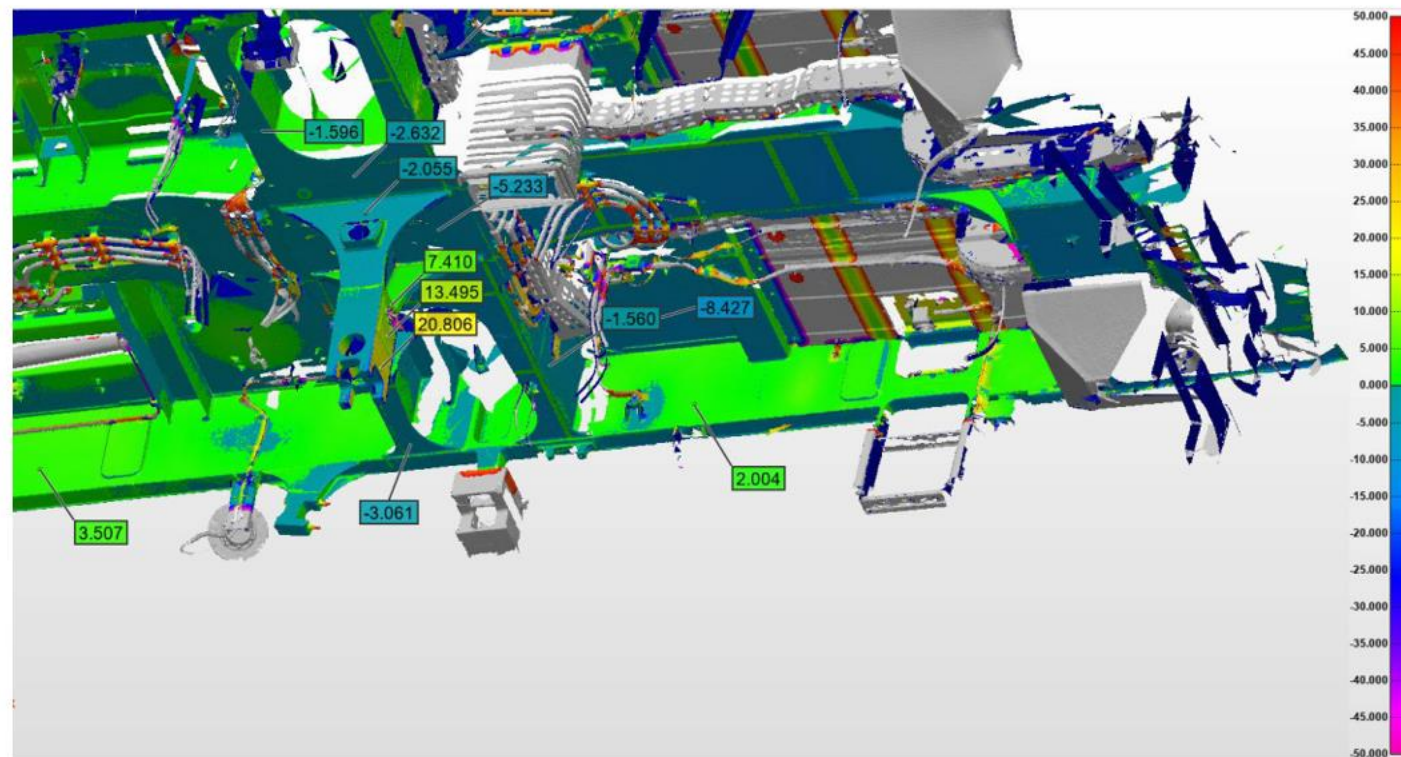


Right side display significant deviations from original positions

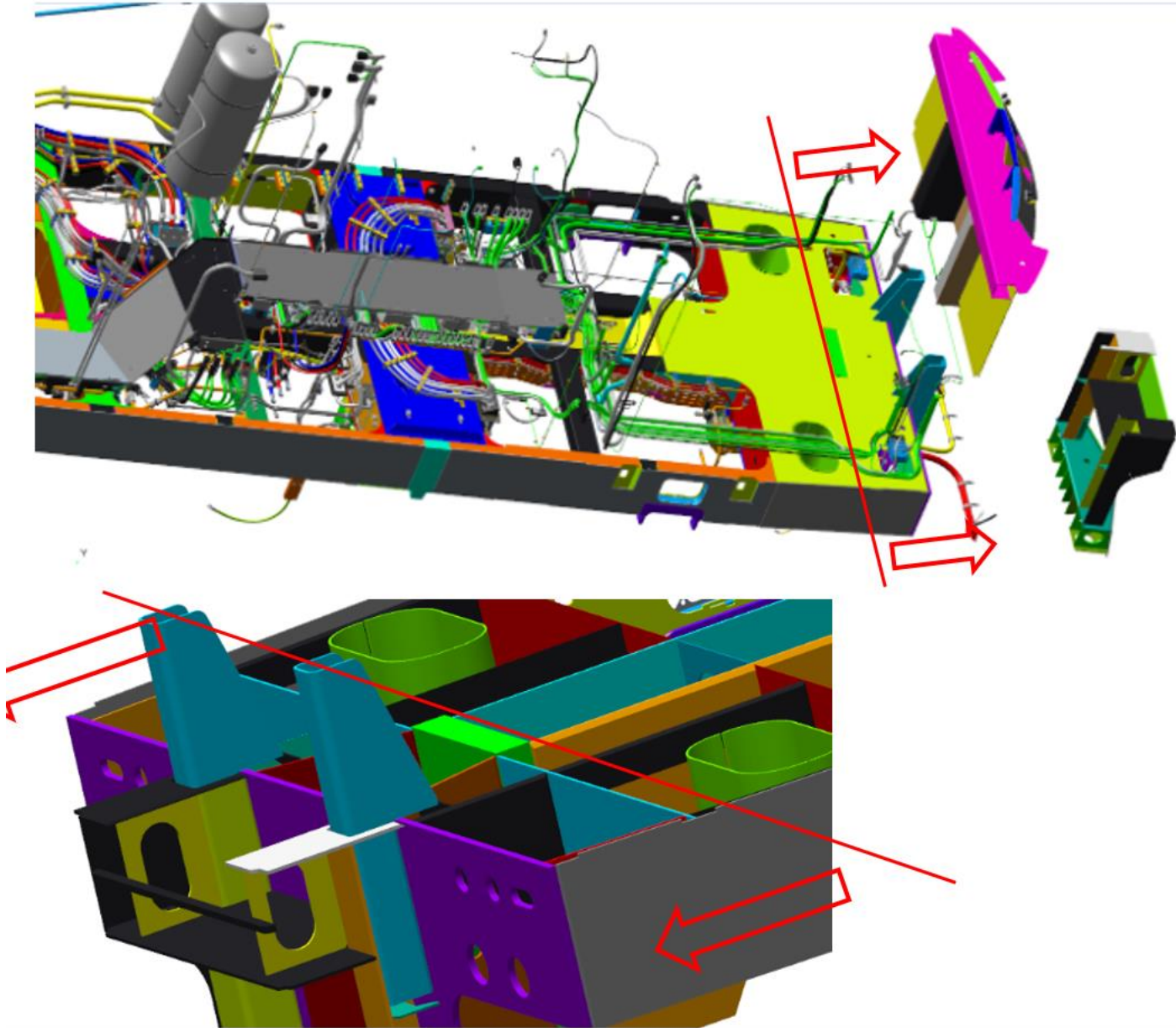




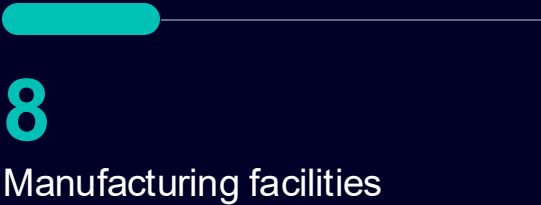
Left side cab wall displays visible deformed areas



Forward pivot pin view is observed from the right-hand side to the left-hand side



# Our passion for mobility in North America





# Mobility solutions are made by people – it's up to us to lead the change and create impact

## Our Employer Value Proposition



### Impact

From Day 1, our employees are empowered to create an impact with their full potential and creativity to make a difference for a better tomorrow.

### Culture

We truly have an inclusive and diverse team culture where everybody can be themselves.

### Career

A superior variety of global career journeys in businesses, countries, and job families help our people stay relevant.

# Contact

Siemens Mobility North America HQ  
1 Penn Plaza  
New York, NY 10017

[Siemens Mobility USA Website](https://www.siemensmobility.us@siemens.com)  
[siemensmobility.us@siemens.com](mailto:siemensmobility.us@siemens.com)


## For further information:


[About us](#)

[Careers](#)

[Press releases](#)

 [@SiemensMobility](https://twitter.com/SiemensMobility)  
Stay updated with news, reports, and releases

 [@SiemensMobility](https://www.facebook.com/SiemensMobility)  
Connect with the mobility community

 [@Siemens Mobility](https://www.youtube.com/SiemensMobility)  
Experience and learn about the mobility world through meaningful stories

 [@Siemens\\_Mobility](https://www.instagram.com/Siemens_Mobility)  
See the stunning showcase of our state-of-the-art trains

 [@SiemensMobility](https://www.linkedin.com/company/SiemensMobility)  
Get inspired by the latest updates and thought leadership pieces

# Disclaimer

© Siemens Mobility 2025

Subject to changes and errors. The information given in this document only contains general descriptions and/or performance features which may not always specifically reflect those described, or which may undergo modification in the course of further development of the products. The requested performance features are binding only when they are expressly agreed upon in the concluded contract.

All product designations may be trademarks or other rights of Siemens Mobility, its affiliated companies or other companies whose use by third parties for their own purposes could violate the rights of the respective owner.